

APTUM
CUSTOMIZED
LIGHTING
CREATIONS

CONTOUR LIVING CIRCLE

user instructions

Congratulations on choosing this original "CONTOUR LIVING CIRCLE" light designed by APTUM. We hope you will enjoy using this product.

Please follow these instructions to ensure correct installation. If you have any questions or comments, please do not hesitate to contact us by mail on:



Please read these instructions carefully and retain them for future reference to ensure that the lamp is used correctly.

For your own safety, please study each step of this instruction manual first. APTUM is not responsible for any faults or damages caused by not following these instructions correctly. Do not modify this lamp in any way.



CONTOUR LIVING CIRCLE

SAFETY PRECAUTIONS

- Dispose of plastic bag from packaging and do not allow children to play with it.
- Keep product well out of children's reach.
- The lamp is only intended for interior use.
- Do not attempt installation of product if you are not competent to do so yourself.
- Consult a professionally qualified electrician if in any doubt.
- Disconnect the electricity supply at the fuse box, before commencing work.

CLEANING INSTRUCTIONS

- Switch off the electricity supply before cleaning.
- Wipe surface of the lamp with a soft dry cloth.
- Do not use any abrasive cleaning tools such as steel wool, scouring sponges or stiff brushes.

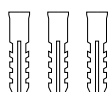


CONTOUR LIVING CIRCLE

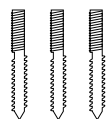
Content of box



Cover rings



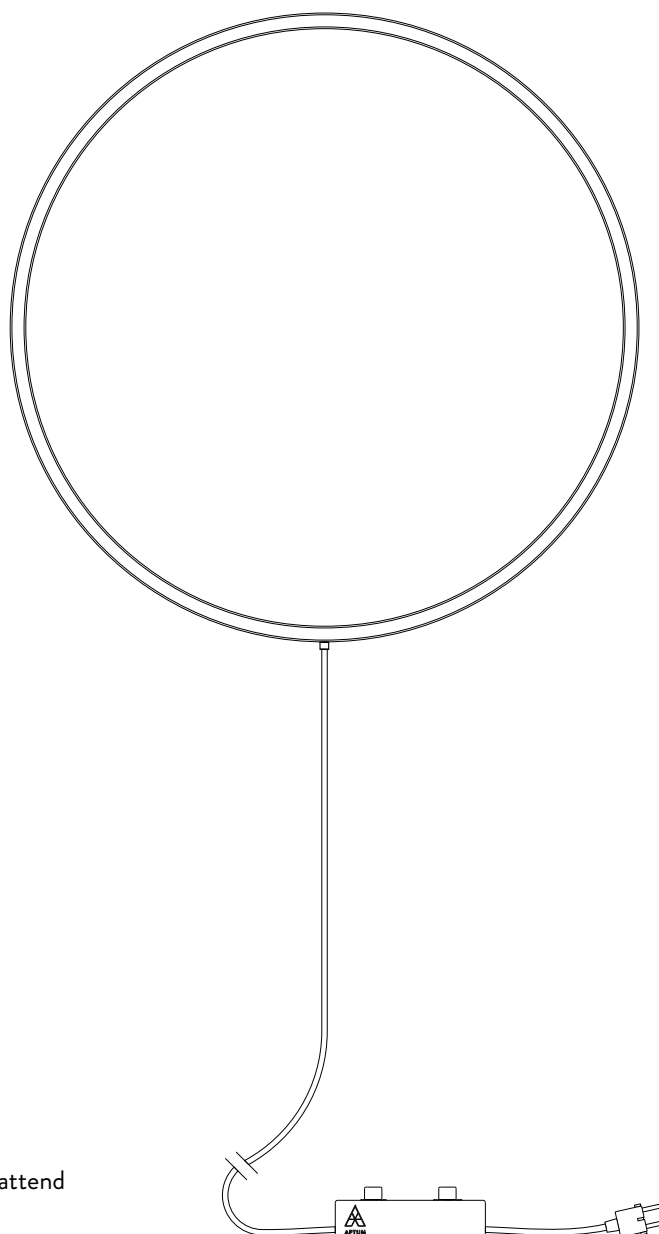
Plugs



Bolt partially flattend



Allen key

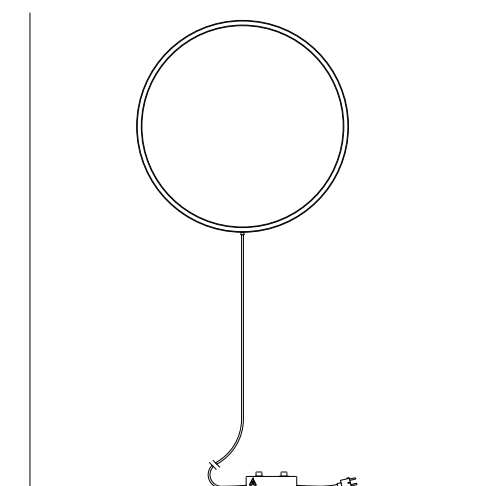


WHAT DO YOU NEED?

- 2 Persons to install
- Drill diameter suitable for the plugs
- Torx screw driver TX15

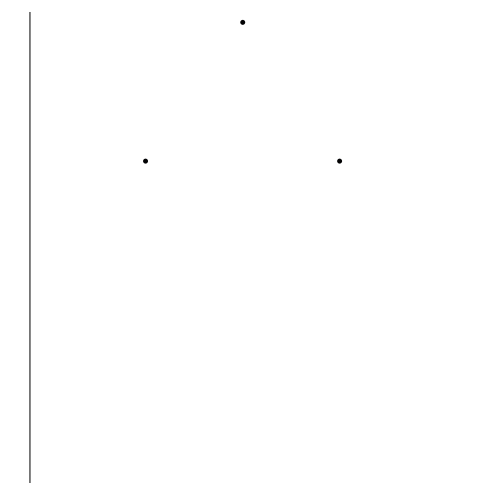


INSTALLATION MANUAL



STEP 1

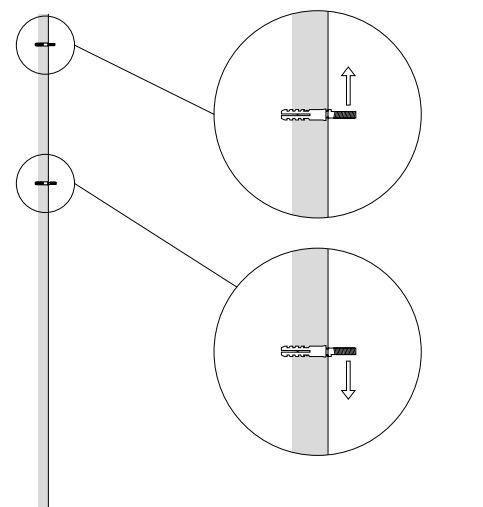
Hold the lamp against the wall on the desired spot. Use a leveler to ensure the Contour Living Circle is level. Mark the location where the three tubes touch the wall.



STEP 2

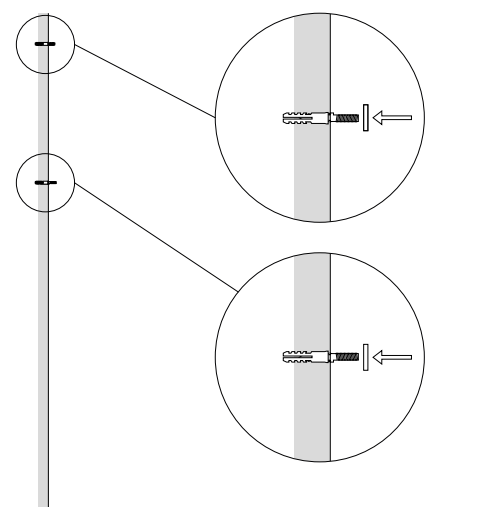
The plugs provided are suitable for most materials (e.g. concrete/plaster). If necessary, use a suitable alternative plug.

Drill the holes in the wall corresponding to the plugs you use and put the plugs in the holes.



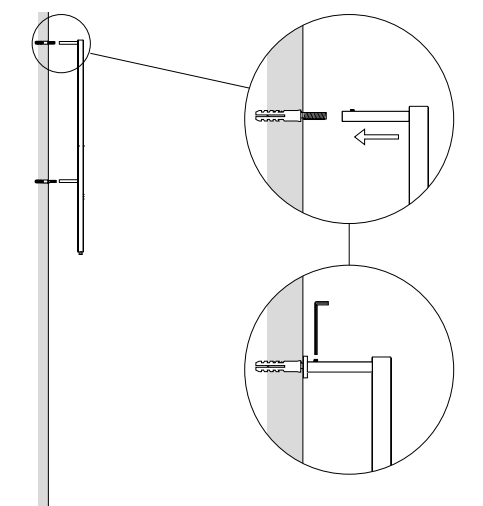
STEP 3

Screw the supplied bolts in the plugs using a torx screwdriver/bit. Make sure that the flat face of the 2 bottom bolts face down and the flat face of the top bolt up



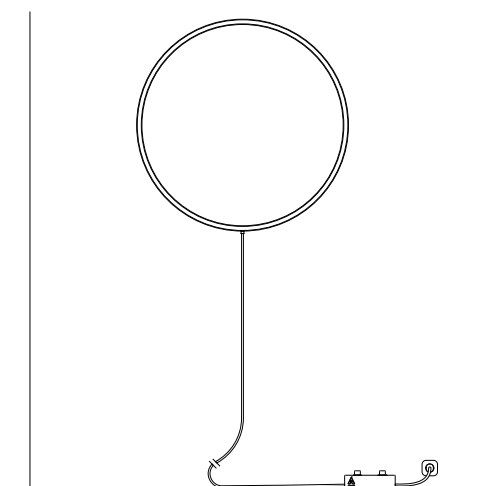
STEP 4

If necessary: Use the cover rings to mask the plug. Put the cover ring around the bolts in the wall.



STEP 5

Place the lamp with the rods over the bolts in the wall. Tighten the allen bolts on the wall side.



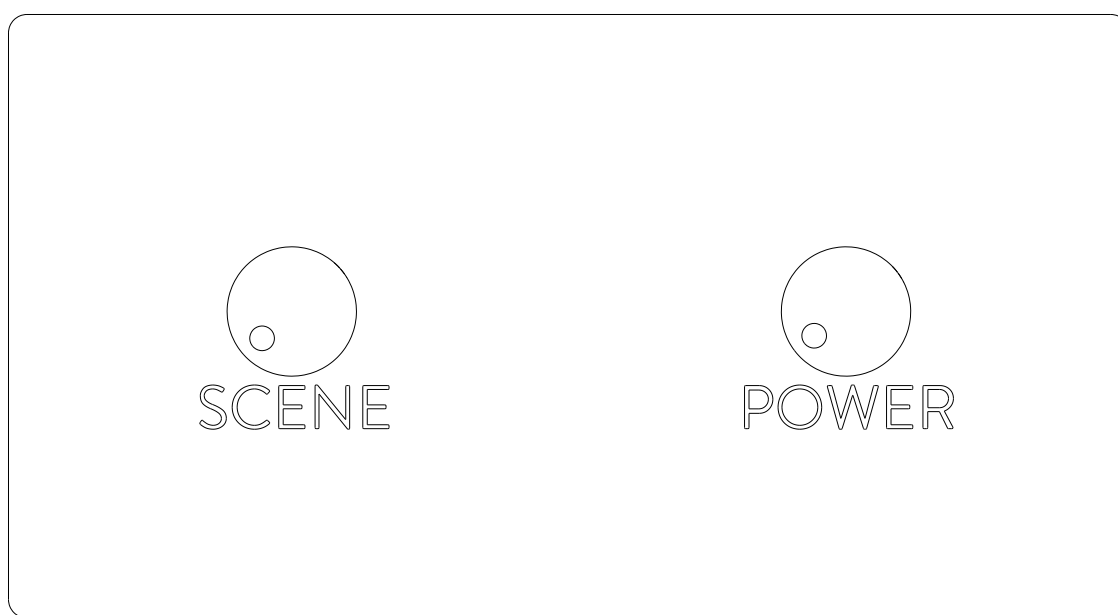
STEP 6

Make sure the lamp is hanging firmly on the wall. Now plug in the power cord.



CONTROLS

Instructions



POWER

Rotate the knob clockwise to turn the Living circle on and counterclockwise to turn it off.

SCENE

Rotate the knob clockwise to switch between the different settings:

- warm white fully filled
- twinkle – warm white
- twinkle – winter
- twinkle – summer
- twinkle – disco
- twinkle – joyous
- twinkle – starry night
- gradient mint green
- gradient ochre
- gradient purple
- gradient soft yellow



CE   IP20 



APTUM
CUSTOMIZED
LIGHTING
CREATIONS

CONTACT

Phone: +31 40 220 4500

Email: info@aptumlighting.com

ADDRESS

Gashouder 13

5613 CR Eindhoven

The Netherlands

WEBSITE

www.aptumlighting.com

